

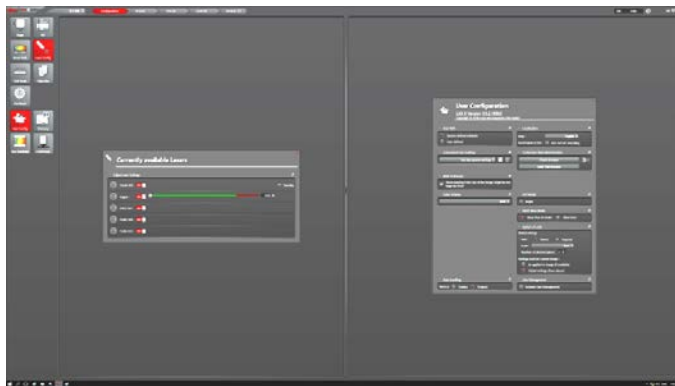
Leica SP8 Quick Instruction:

Start Up:

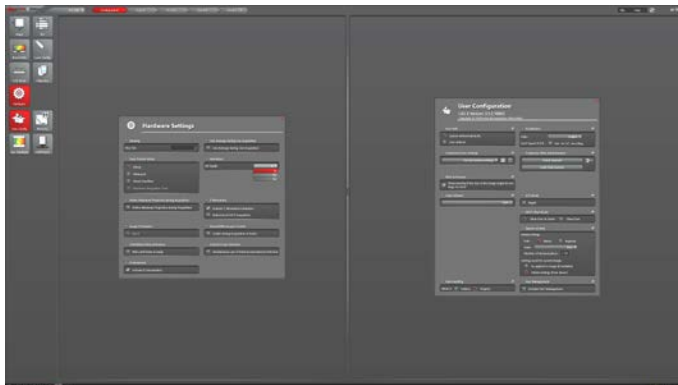
1. Turn on Leica Mercury lamp
2. Switch on PC/Microscope, Scanner Power, Laser Power and turn the Key to On-1
3. Login Windows 10 account:
 - a. User Name: LASX-User; Password: logbook



4. Run new software LAS X
5. Wait till software is fully loaded
6. Go to Configuration – Laser Config window, turn on lasers to use – **Difference 1, no laser is on without this step!!!!**



7. (Optional) Go to Hardware and choose Bit Depth from Resolution list



Shut Down:

1. Turn lasers off from Configuration – Laser Config window. If Argon is used, wait about 5 minutes till the cooling fan stops - **Difference 2, no laser is OFF without this step!!!!**
2. Quit LAS X program
3. Take Off your samples
4. Save data to **E** drive – Never save your images on C or D drive!
5. Turn off laser key, switch off three green powers and power on mercury lamp house.
6. Sign on/off logbook.